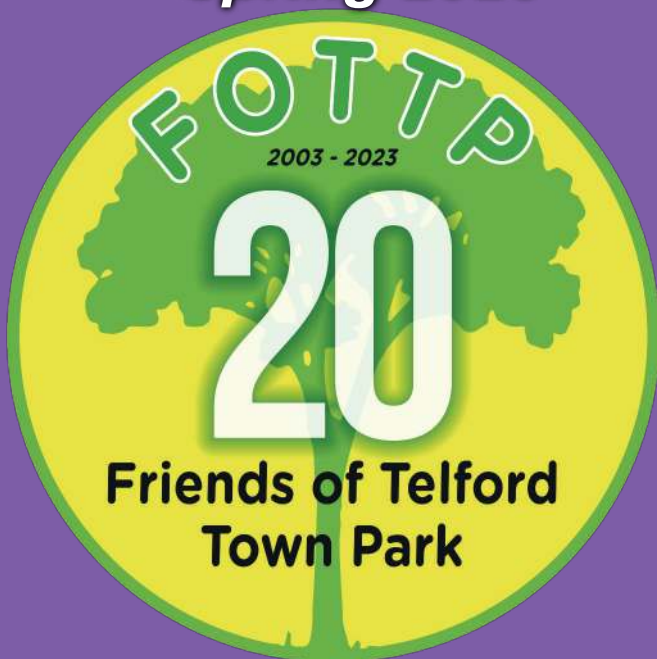


FREE

EXPLORE...



Spring 2023



***The magazine of the
Friends of Telford Town Park
www.friendsoftelfordtownpark.org
Promoting. Conserving. Protecting.***

INFORMATION

Keep up to date with the Friends of Telford Town Park

Visit our website www.friendsoftelfordtownpark.org

Find us on Facebook <https://www.facebook.com/FOTTP>

Call in to the Park Visitor Centre or telephone **01952 - 382340**

FOTTP, Telford Town Park Visitor Centre,
Hinkshay Road, Telford, TF3 4EP



TELFORD TOWN PARK
Green Flag Award
2022 - 2023



We are very grateful to all our members
and to the following for their
continued support

Telford & Wrekin Council

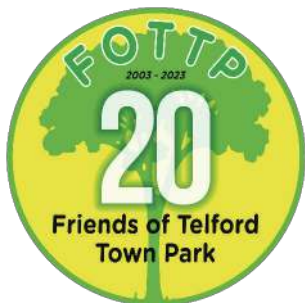
**The Telford Town Park Manager
and the staff**

Southwater Event Group

Henshalls Insurance Brokers Ltd

J & PR Ltd

**and several of the local
Town and Parish councils**



Editorial Spring 2023



Hello and welcome to this edition of Explore.

We wish all our readers a prosperous 2023 and at the Friends we really hope to get back to some kind of normality this year. We have a special reason for this, as it is the twentieth anniversary of becoming a formally established group. We hope to have a few events to celebrate the fact this year, so keep an eye and ear out for information.

Last year, we were formally re-presented with our Queen's Award for Voluntary Service by Anna Turner, the Lord Lieutenant of Shropshire at a ceremony at the Holiday Inn, Telford. This had been deferred because of Covid restrictions in 2020 and only a handful of people saw us receive it then. The evening event with a buffet was attended by around 50 people including many of our supporters as well as several members. Picture below.

We are still enjoying good income from our Twincl membership. For those who are not aware of Twincl, this is a weekly lottery organised by Telford & Wrekin Council for voluntary organisations to raise money on a regular basis, with 50% of the ticket price going directly to the good cause. See page 13 for more details and how to join and help to maintain our funding.

We hope to see many more of you come and visit the park this coronation year, especially the formal gardens where most of our work is carried out. However, we hope to do some more work in the local nature reserve as well this year. If you would like to learn about hedge laying, then get in touch!

Best regards, Chris Pettman, Chairman, FOTTP.

www.friendsoftelfordtownpark.org



Proud to support the Friends of Telford Town Park.



For all your insurance requirements visit:

www.henshalls.com



mail@henshalls.com



01952 820358.

Memory Plaques



These unique plaques are available to purchase from the Friends of Telford Town Park and any profit will go towards the Friends and will help to maintain the site.

When one of these plaques is bought, it entitles the purchaser to have it hanging in the Sensory Garden in perpetuity. The Friends will do all they can to ensure the safety of these plaques but NO responsibility can be accepted by the FOTTP or Telford & Wrekin Council for any loss or damage.

Each plaque costs £20 to buy and you can then get it engraved, on one side only, for a flat price of £20 at Timpsons in the Town Centre. Total price is £40.

This usually takes around a week or two, so please allow for that when ordering engraving as the plaques are sent for engraving to Timpsons Head Office, as it cannot be done at the town centre site due to the shape of the plaques.

To buy a plaque please contact Colin Thompson at:

cthompson@bcs.org.uk

New plaques will normally be delivered to the Visitor Centre for collection within a few days and you will be notified of this.

Following the success of the last scheme with the metal leaves we expect this scheme to be just as popular, so do not delay if you think this for you !

Visit our new **ZOO** in the heart of Telford Town Park.



Why not book one of our
VIP Animal Experiences and join a keeper
to meet one of your favourite animals?
Visit our website for more details and
to find out what else we do...



www.**exoticzoo.co.uk**

Tel: 01952 591 164

Email: info@exoticzoo.co.uk

ANIMAL PARTIES • EDUCATION • THERAPY





In 2022 the Friends published a new guide to Telford Town Park showing all the attractions along with some history of the park and some past events. This guide makes a wonderful souvenir of your visit and has useful information, so that on your next visit you may find out more about the 450 acres of park, woodland, lakes and local nature reserve. It only costs £3.50 and is available from the Visitor Centre and the Exotic Zoo. Make sure you get your copy. In case of difficulty please contact us via our web site.

www.friendsoftelfordtownpark.org



Wonderland

Wonderland in Telford Town Park, fabulous fun for all the family to have a great day out. See website for opening times.

www.wonderlandmidlands.co.uk

Things to do in the park



*L to r descending from top.
Fishing, Chelsea and Maxell
Cherry Gardens, Disc Golf,
Southwater cafes, Adventure
Golf, Sky Reach climbing, Play
areas for all ages including a
trim trail. Note: Some activities
are chargeable.*





Join us

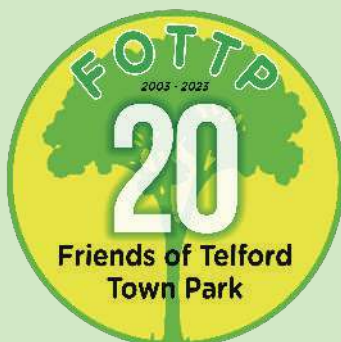
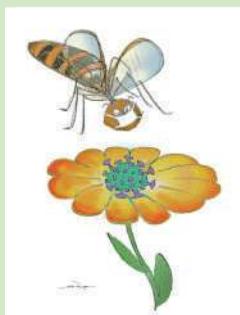
No experience
necessary!



The Friends of Telford Town Park started out in 2002 with just a few members and were formally constituted in 2003. We are now in our twentieth year with nearly 40 members and supporters and lots of projects under our belt and in the pipeline. There is no doubt that in these days of financial difficulties everywhere, the Town Park included, we have made a real difference to the ongoing maintenance of the park for the benefit of the whole community and beyond, as well as winning some prestigious awards, including the Queens Award for Voluntary Service, the equivalent of the MBE for volunteers.

Some of our projects have involved the restoration of the Crannog on Grange Pool, the replacement of the wind vane on the Queen's Silver Jubilee Monument, the replacement of the old Sensory Garden, doing a fair amount of hedge laying and scrub clearing, built a large bug hotel and a stumpery in the Chelsea Gardens. We get involved with gardening, woodwork, painting and other general maintenance tasks. No experience is necessary. If you would like to become a part of this success story, contact us via our website or leave your details at the reception desk in the Visitor Centre. **FULL Membership is FREE** and carries some unique benefits, or you can become a **SUPPORTER member**. By becoming a supporter member you agree to support us but are not actually available to work.

However, it does not prevent you from helping occasionally if you are able to. You could for example purchase a copy of our new **Town Park guide** for £3.50p. All profits go to our funds. Thank you.



Garden News

New garden

The Friends have applied for a grant to help us install a new garden within the Chelsea Gardens to commemorate the coronation of HRH King Charles III on 6 May 2023.

This will be situated in a previously slightly overgrown part of the Chelsea Gardens which will be cleared and totally replanted with several varieties of plants to represent the four countries of the UK and a centrepiece sculpture. It is anticipated that it will be complete in time for May 6 with an official opening a couple of weeks later. Watch out for information on this great news.



Return to work!

The Friends working group returned to work on Wednesday February 1 after a relaxing break over Christmas and the early part of January. 9.15am to 1pm.

There will be much to do as usual, including, as soon as the weather warms up a bit, a lot of repainting to do. Last year we finished the upgrading of the black railings in the Maxell Cherry Garden and I must say they look stunning.





The Fun Page

WORDSEARCH

Telford Town Park Attractions

| | | | | | | | | | | | | | | |
|---|---|---|---|---|---|---|---|---|---|---|---|---|---|---|
| T | U | Y | Z | G | G | E | U | L | N | U | B | L | H | R |
| D | T | E | P | X | G | U | O | F | U | Q | S | O | Z | Z |
| N | G | X | Q | C | R | A | C | S | U | X | A | O | D | M |
| A | R | O | G | M | D | Q | R | Q | A | J | D | P | V | T |
| L | H | T | C | W | E | W | G | D | R | G | K | Y | K | P |
| R | E | I | W | A | H | M | M | C | E | H | V | H | L | U |
| E | Y | C | Y | K | F | X | O | Z | N | N | I | T | T | X |
| D | A | Z | J | W | S | E | G | R | A | A | S | I | G | Z |
| N | L | O | N | K | W | J | A | D | I | D | T | W | N | V |
| O | P | O | K | U | I | V | W | D | H | A | I | Z | D | E |
| W | R | C | R | A | N | N | O | G | W | U | L | Z | T | H |
| J | E | H | H | F | G | C | H | E | L | S | E | A | M | R |
| G | T | T | J | T | S | E | J | O | C | W | T | U | W | T |
| B | A | A | O | Q | L | X | O | C | I | T | K | D | Q | A |
| I | W | B | I | K | E | H | U | B | X | R | W | S | V | H |

ARENA
CHELSEA
GARDENS
SWINGS
WITHYPOOL
WATERPLAY
EXOTICZOO
WONDERLAND
BIKEHUB
CAFE
CRANNOG
MEMORIAL

Words can be up down or across

1. Why didn't the dendrochronologist get married?
2. What happens when it rains cats & dogs?
3. What is a tree's least favourite month?
4. What did the tree do when its local bank shut down?
5. How do you identify a Dogwood shrub?
6. What kind of flower is on your face?
7. What did the flower say after telling a joke?
8. How does a bee brush its hair?

1. He only dated trees 2. You must watch out for poodles
3. September 4. Started its own branch 5. By its bark
6. Tulip 7. I was only pollen your leg 8. With its honeycomb

2023 Fun Run

Sunday 3 December 2023*
TELFORD TOWN PARK
Mark it in your diary



**Every Air
Ambulance
lift off costs
£2,950**

Annual target £10 million +

www.midlandsairambulance.com

Please visit the Midland Air Ambulance Charity web site to check when you can register. Details later this year.

Anyone could have a desperate need for the Air Ambulance because you just never know what is around the corner. This great facility does not receive any government funding and relies entirely on voluntary contributions.

Sunday 3 December 2023*

***(Provisional date)**

**In the meantime please continue to support
the Midlands Air Ambulance charity
whenever you can.**



Telford and Wrekin
Community Lottery



Request your
FREE
syndicate
form today!

All for one and one for all

Why not start a **syndicate today?** An exciting way to support your local community as a team

- You have more chances to win with a syndicate
- Your support makes a HUGE difference to your community
- Need help? Contact your support team – details on the lottery home page
- It's a WIN WIN for us both – you could win up to £25,000 every week!

To start supporting, visit:

www.twincl.co.uk

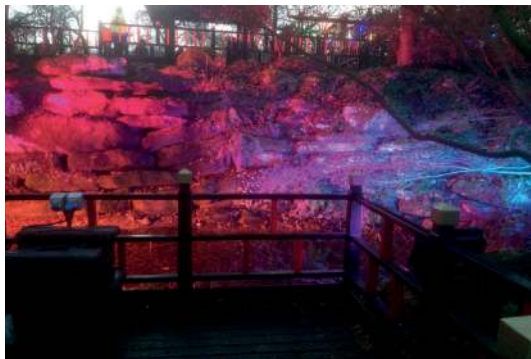
and search for: **Friends of Telford**



Supporters must be 16 years of age or older

A syndicate is an external agreement between the syndicate manager and the team. For a free syndicate document please call the support team, the number can be found on the lottery website.

News



Stunning pictures from the Christmas Experience put on by the events team of Telford & Wrekin Council in the formal gardens the week before Christmas, including a real time clock image (above). It was a fantastic experience and free as well!



VISITOR CENTRE



Normal opening hours

Please check the town park web site for up to date details

www.telfordtownpark.co.uk

Telephone: 01952 382340

In case of life threatening emergency when closed please phone 999 or 112

A defibrillator is available on the adjacent building. Emergency services will give you the unlock code



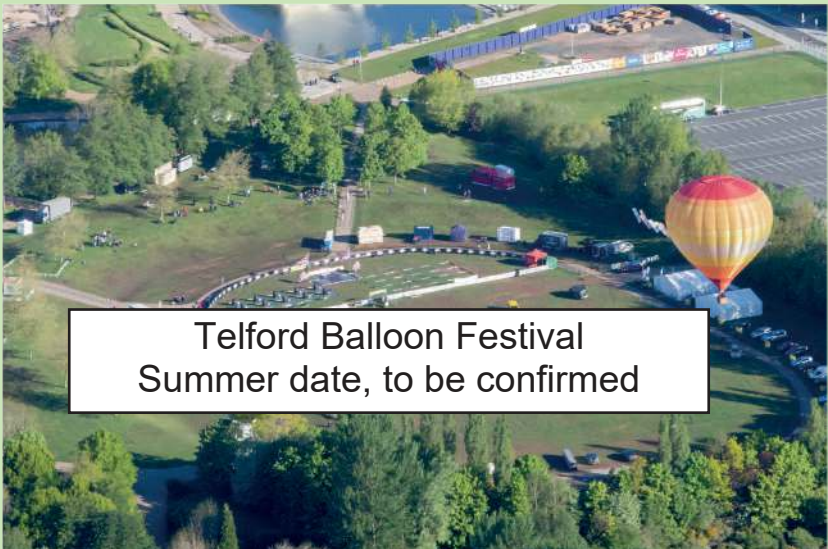
Parking Dark Lane Car Park- charges apply

November to March 9.0 am - 6 pm

April to October 7.0 am to 8 pm

A variety of information is available from the Visitor Centre when reception is open. Trail guides, souvenirs, vending machines for hot drinks and refreshments. Cards accepted as well as coins. **The Place in the Park** cafe is often open at weekends (good weather or an event is on) and during the school holidays. Events are often taking place in the park. See web site for details or call 01952 382340.

Telford & Wrekin Council TOWN PARK EVENTS



Telford Balloon Festival
Summer date, to be confirmed

www.telfordtownpark.co.uk