

FREE

EXPLORE...

Summer 2020



***The magazine of the
Friends of Telford Town Park
Promoting. Conserving. Protecting.
www.friendsoftelfordtownpark.org***

INFORMATION

Keep up to date with the Friends of Telford Town Park

Visit our website www.friendsoftelfordtownpark.org

Find us on Facebook <https://www.facebook.com/FOTTP>

Follow us on Twitter <https://twitter.com/FOTTP>

Call in to the Park Visitor Centre or telephone **01952 - 382340**



**TELFORD TOWN PARK
Green Flag Award
2019 - 2020**



We are very grateful to the following
for their continued sponsorship

Telford & Wrekin Council

Telford Town Park

Southwater Event Group

British Ironwork Centre

Henshall's Insurance Brokers

**and several of the local
town and parish councils**



Editorial

June 2020

Welcome to this edition of **EXPLORE**, the magazine of the Friends of Telford Town Park. If you are new to **EXPLORE** then welcome, it is published 2 or 3 times a year to keep the general public up to date with what we have done in the park and what we hope to achieve in the future, along with some useful information regarding opening times of the Visitor Centre, car parking and so on.

This year we are thrilled and delighted to have been awarded the Queens Award for Voluntary Service, considered to be the MBE of voluntary groups. We were nominated by Clive Knowles, Director and owner of the British Ironwork Centre which is situated between Shrewsbury and Oswestry. The nomination was also supported by Telford & Wrekin Council and Mr Tom Gray of the Southwater Event Group, who own the International Centre and several local hotels. We are extremely grateful to these wonderful people for recognising the work that we do and the efforts of the team that is the FOTTP.

If you would like to join us for a few hours a week or whatever you can do, then you will be made most welcome. We are currently seeking not only general volunteers but specifically a Secretary, Treasurer and a PR Manager. No experience necessary to join us just a passion for our beautiful town park. We are so lucky in Telford to have one of the largest urban parks in Europe along with masses of trees helping to absorb any localised pollution.

There are a variety of tasks we undertake, including gardening, painting, woodwork, scrub clearing, hedge laying and other general maintenance tasks throughout the park's 450 acres.

For more information about the Friends, please either contact the Visitor Centre on 01952 382340 or go onto our web site and click on the contact us link. www.friendsoftelfordtownpark.org

We also run a unique discount scheme for working members or you could just join us a supporter without any commitment to working.

We hope to see many more of you in the months to come, regards
Chris Pettman, Chairman.

Advertisements



01952 820358

**Thank you to the thousands of clients
who make us who we are today**

www.henshalls.com

Authorised and regulated by the Financial Conduct Authority

Littleford's Nursery

helping your garden grow

Sinclair Gardens, Ketley,

Telford, Shropshire, TF1 5HP

01952 246200

07930 660360

andrew.littleford@blueyonder.co.uk

10% discount for FULL FOTTP members

Future plans

One plus about the restrictions during the corona pandemic has been to give all of us at the Friends time to sit down and think about what we want for the park in the coming months and for that matter years.

Something that may be welcomed, is to extend the working hours on a Wednesday and bring back some working on other days. The day could be arranged that more people could pop in when it is convenient and also finish when they are ready to go home, whatever time that is. We have to keep in mind of course the opening hours of the formal gardens.

We would also like to establish a working team to look after the nature reserve and nearby areas, with hedge laying, scrub clearing and other general maintenance. Due consideration of course has to be given to the wildlife, in particular the nesting season, generally from March through to August. Free training can be arranged to help you with this activity.

We also used to carry out guided themed walks, such as bat walks and dawn chorus walks. There is much to think about here. It will of course mean having the volunteers to carry these tasks out and we are confident that we will be able to find some more willing souls to help out from time to time. Could this be you?

There are also some ideas around improving the Maxell Cherry Garden to make it more Japanese in style and also to renovate some of the structures. We are also hoping to repeat a Sakura festival as we did in 2018 as part of the Telford 50 celebrations.

We are currently awaiting the outcome of a planning application submitted by the Telford Exotic Zoo, to open on the old TWS depot off Dark Lane. This could bring more volunteering opportunities, especially for animal lovers. Planning application number TWC/2020/0412 for details.

If you have any ideas or thoughts about improvements to the Town Park then please get in touch via our web site or the Visitor Centre when it re-opens.

"If you don't have a dream, how you gonna have a dream come true"
As the words of the famous song go !!!

Garden NEWS



Even during lockdown, the gardens are stunning and we will be glad to get back in to continue our work.

FOTTP Working in the garden is temporarily suspended



The Friends normally work in the formal gardens every Wednesday from 9.15 to 1pm. If you think you might enjoy a spot of light gardening or general help, pop along and have a chat with no obligation.

At 11.0 am you might even get a freshly made cup of tea or coffee and a biscuit !



More garden news



Hive I got News for You!

Despite the lockdown due to the Corona virus, our bees have not only been looked after by the lovely Alision Wakeman but she has added a second hive for us. This became urgent as the existing hive had produced so many more bees that they were in danger of swarming and we could have lost them all! We should be well on the way to producing some honey, maybe later this year. Watch this space! If we do, the ultimate plan is for it to be on sale in the Visitor Centre. If you would like to be involved with bee keeping then there are sometimes courses available to members of the Friends or you could contact Alison direct via her Facebook page or alisonwakeman@hotmail.com



New sculpture for the Maxell Cherry Garden



Grant funding has been obtained for another sculpture, this time for the Maxell Cherry Garden. It will be installed mid summer to celebrate the seventy fiftieth anniversary of peace in the Far East after the Second World War. The picture here a rough sketch of two views of the possible design which is being made by Jacob Chandler who sculpted the new one at the entrance to Telford Shopping Centre.....keep an eye of the news!



Telford and Wrekin
Community Lottery

supporting



Play Twinkl Lottery and support our cause!

- Make a difference to the community and support our cause
- Sign-up for only £1 a week!
- You get the chance to win cash prizes up to £25,000 every week!
- We get 50p from every £1 ticket and a further 10p goes to other good causes
- Join your community in making where we live an even better place

To start supporting, visit:

www.Twincl.co.uk

and search for: **Friends of Telford**

Supporters must be 16 years of age or older





The Queen's Award
for Voluntary Service

Join us



The Friends of Telford Town Park started out in 2002 with just a few members and were formally constituted in 2003. We are now approaching our seventeenth year with over 20 members with lots of projects under our belt and in the pipeline. There is no doubt that in these days of financial difficulties everywhere, the Town Park included, we have made a real difference to the ongoing maintenance of the park for the benefit of the whole community and beyond, including winning some prestigious awards.

Some of our projects have involved the restoration of the Crannog on Grange Pool, the replacement of the wind vane on the Queens Jubilee Monument, the replacement of the old sensory garden, doing a fair amount of hedge laying and scrub clearing and built a large bug hotel in the Stumpery area of the Chelsea Gardens. The Friends were also heavily involved in obtaining the £49,500 grant funding from SUEZ to reinstate the 2 fountains and the waterfall in the Chelsea and Maxell Gardens, which are now complete, despite some initial glitches and much more besides.....!

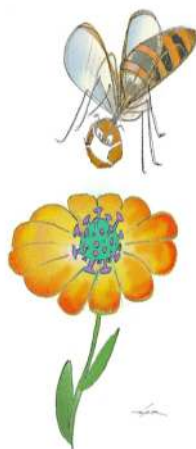
If you would like to become a part of this success story, contact us via our website or leave your details at the reception desk in the Visitor Centre. **FULL Membership is FREE** and carries some unique benefits, or you can become a **SUPPORTER member**.

CORONA VIRUS

Please note that due to the current restrictions at time of writing the Friends are not working in Telford Town Park.

Please watch our web site for any announcement of a return to normal working.

www.friendsoftelfordtownpark.org
www.telfordtownpark.co.uk
www.telford.gov.uk



2019 Fun Run

SUNDAY 6 December 2020
TELFORD TOWN PARK



**Every Air
Ambulance
call out costs
£2,500**

Annual target £9 million +
www.midlandsairambulance.com

This year's fancy dress fun run will be held on
Sunday 6 December 2020 at 12 noon

Open from 10.30am

Please visit the Midland Air Ambulance Charity web site to check when you can register. Details soon.

Anyone could have a desperate need for the Air Ambulance because you just never know what is just around the corner. This great facility does not receive any government funding and relies entirely on voluntary contributions.

So your support is vital for the continuation of this wonderful service. For details of how to register to enter this event, please go to: **www.midlandsairambulance.com** and click on events.

Whilst the Friends are not organising this years event, we will be supporting it with volunteer staffing. Hope to see you there!

We look forward to seeing some even more outrageous and fun fancy dress costumes and of course lots of sponsorship money.



The Fun Page

Furlough Merlot: Wine consumed in an attempt to relieve the frustration of not working. Also known as 'bored-eaux'.

Coronadose: An overdose of bad news from taking in too much media during a time of crisis. Can result in a 'panicdem'.

Anti-Social Distancing: Using health precautions as an excuse for snubbing anyone you do not like.

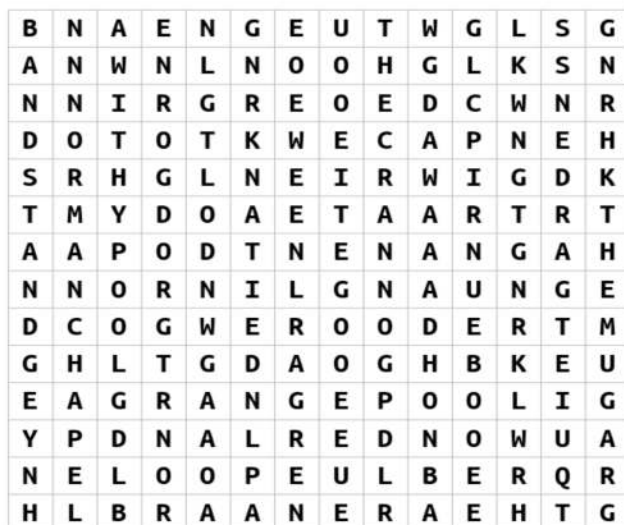
Covid-10: The extra 10lbs. weight gained from comfort eating and drinking. Also known as 'fattening the curve'.

Le Creuset Wrist: An aching arm after taking your best cookware outside to bang on, for the NHS.

Carowner virus: Owning several cars even though you only need one.

Quarantinis: Experimental cocktails made with very old bottles of wine and spirits from the depths of your sideboard.

Telford Town Park Wordsearch



THE CRANNOG
THE MUGA
WONDERLAND
NORMAN CHAPEL
GRANGE POOL
QUIET GARDEN
BLUE POOL
THE ARENA
BANDSTAND
TWIN TRACKS
WITHY POOL

NOTE:
Words can be in
any direction

Play this puzzle online at : <https://thewordsearch.com/puzzle/1235705/>

VISITOR CENTRE



Normal opening hours

Please be aware that the opening times
vary at different times of the year

Telephone: 01952 382340

10.00am - 5pm daily

MAY, JUNE, JULY, AUGUST & School Holidays
(Excluding Christmas and February half term)

10am - 4pm daily

MARCH, APRIL, SEPTEMBER, OCTOBER

10.0am - 3pm

NOVEMBER, DECEMBER, JANUARY and FEBRUARY

(Closed every Monday & Friday)

The nearest toilets outside of the above opening times are located in
Telford Ice Rink or SW.1 in Southwater Square.

**In case of life threatening emergency when closed
please phone 999 or 112**



Parking Dark Lane Car Park- charges apply

November to March 9.0 am - 6pm

April to October 7.0 am to 8 pm

News



*Some more lockdown views in the park
from Josh, idVerde.
Thanks Josh for carrying on with some
essential maintenance*

Advertisement

The advertisement for Telford repro features a central logo with the text "telford repro" in white, set against a vibrant, multi-colored starburst background. Surrounding the logo are several examples of their digital print products: a stack of business cards, a pull-up banner, a brochure with a "25% off" discount, a person holding a large poster, and a lanyard with an ID badge. The text "Shropshire's leading Full Colour Short Run Digital Print Specialists" is written in a pink, stylized font below the logo. At the bottom, a list of services is provided: Leaflets, Brochures, Graphic Design, Business Stationery, Pull Up Banners, Posters, Outdoor Banners, Glued Pads and much more!

**telford
repro**

***"Shropshire's leading Full Colour
Short Run Digital Print Specialists"***

Leaflets, Brochures, Graphic Design,
Business Stationery, Pull Up Banners, Posters,
Outdoor Banners, Glued Pads and much more!

Tel: 01952 670211

Email: studio@telfordrepro.co.uk

Web: www.telfordrepro.co.uk

Hadley Park East, Telford, Shropshire, TF1 6QJ



**Stay
Safe
We'll
See
you
all
again
soon!**

You were reported as visiting next doors garden under lockdown.

Advertisement

Southwater Event Group

PROUD TO SUPPORT THE FRIENDS OF TELFORD TOWN PARK

With three hotels, the UK-renowned Telford International Centre and event production specialists Stagecraftuk, the Southwater Event Group is within convenient walking distance from Telford's convention quarter and the stunning Telford Town Park. Join us for a drink or something to eat at our restaurants in the Ramada or Holiday Inn during 2018 and see for yourself why our customer service is consistently rated 9/10 and above.



☎ 01952 527 385

💻 southwatereventgroup.com

🐦 @SwEventGroup



Did you know ?

The world population is approximately 8 billion people. This means that if every person in the world took up just 1 square foot of space, you could fit the entire population of the world 4 times over into just Shropshire ! (37 billion square feet)

Dreamt is the only English word that ends with 'mt'.

Lightning strikes can reach up to 30,000 degrees Celsius.

If you are a trained typist, stewardesses is the longest word you can type using your left hand.

85% of plant life on Earth is found in the oceans.

The longest recorded flight of a chicken was 13 seconds.

Advertisement



**www.tinacorfieldphotography.com
01952 240624 or 07816 278322
contact@tinacorfieldphotography.com**

Information

TOWN PARK EVENTS

Most events this year have been cancelled or postponed to 2021 due to the Corona Virus. Please check Telford & Wrekin Council web site for more up to date information or www.telfordtownpark.co.uk or www.friendsoftelfordtownpark.org

Sunday 6 December 2020 (provisional)

10.30am - 1.0pm

**Charity Fancy Dress Fun Run
Midlands Air Ambulance Charity**



Please check with the Visitor Centre to see if any other events are taking place in the Town Park
01952 382340



www.friendsoftelfordtownpark.org

**ALL DETAILS SUBJECT TO CHANGE DUE TO
CORONA VIRUS RESTRICTIONS**

**Please stay at home but you are welcome to use Telford
Town Park for some exercise. Please observe any
Government advice and observe distancing markers**