

FREE

EXPLORE...



Autumn/Winter 2020



**The Queen's Award
for Voluntary Service**



Royal Visit

***The magazine of the
Friends of Telford Town Park***

www.friendsoftelfordtownpark.org

Promoting. Conserving. Protecting.

INFORMATION

Keep up to date with the Friends of Telford Town Park

Visit our website www.friendsoftelfordtownpark.org

Find us on Facebook <https://www.facebook.com/FOTTP>

Follow us on Twitter <https://twitter.com/FOTTP>

Call in to the Park Visitor Centre or telephone **01952 - 382340**



**TELFORD TOWN PARK
Green Flag Award
2019 - 2020**



We are very grateful to all our members
and to the following for their
continued support

Telford & Wrekin Council

The Telford Town Park Manager

Southwater Event Group

The British Ironwork Centre

Henshall's Insurance Brokers Ltd

J & PR Ltd

**and several of the local
Town and Parish councils**



Editorial

Following the granting of the Queen's Award for Voluntary Service last June, we could never have guessed that we would have a royal visitor within a few months. It all happened with just 10 days notice and because of Covid regulations, it was not publicised until after the visit. HRH Princess Anne visited Telford on Monday 28 September, spending some time at Landau in Wellington, officially opened the Silver Swallow Bridge at Telford Railway station and then came on to the Town Park arriving in Southwater Square around 2.15pm.

I was very honoured to be asked to escort HRH around the Chelsea and Maxell Gardens for about half an hour. She was extremely interested in the history of the gardens and the various sculptures therein and also in our conservation work.

She was charming throughout and very easy to talk to and spoke with all of our members who were able to be present. In the Maxell Cherry Garden I presented HRH to Councillor Shaun Davies, leader of Telford & Wrekin Council, who then invited her to plant a tree to commemorate the ending of World War 2, VJ Day. Cllr.Davies then escorted HRH around the remainder of the Maxell Cherry Garden, pointing out the fish covered in recycled drink cans and presenting 3 more FOTTP members. The visit ended on the balcony at the rear of Telford library, where she was presented to Brian Gilbride a long serving gardener in the Town Park who was retiring at the end of the week. Several of the Council members were also presented. A thrilling and momentous event for the FOTTP and we are extremely grateful to Anna Turner, the Lord Lieutenant of Shropshire and Jenny Wynn DL, for facilitating this visit.

So, despite the Covid virus, a wonderful and positive moment for all concerned to remember 2020 for.

Chris Pettman, Chairman.

Advertisements



01952 820358
Thank you to the thousands of clients
who make us who we are today

www.henshalls.com

Authorised and regulated by the Financial Conduct Authority

Littleford's Nursery

helping your garden grow

Sinclair Gardens, Ketley,
Telford, Shropshire, TF1 5HP
01952 246200 07930 660360
andrew.littleford@blueyonder.co.uk

10% discount for FULL FOTTP members

The Royal Visit



Talking to Brian Herring



HRH and Cllr. Shaun Davies



*Talking to Creed, Andy Bunn
and John Lewis*



*Talking to Maria and Colin
Bright*



*Leaving the Maxell Cherry
Garden*



Planting the Acer Tree

New PR Sponsor

Voluntary group the award winning Friends of Telford Town Park wins support from new sponsor

The FOTTP working to promote, conserve and protect the award winning Telford Town Park has scooped the support of a new sponsor.

Friends of Telford Town Park (FOTTP) is now sponsored by J&PR Ltd, based in Wellington, which will see the PR and content creation agency boost the profile of the voluntary group.

The group, which carries out projects like woodwork, painting and gardening, works alongside council contractors to maintain the Maxell and Chelsea Gardens, as well as other areas of the 450 acre site.

The group of volunteers work every Wednesday in the gardens and have recently returned following lockdown.

Chris Pettman, Chairman of FOTTP, said he is looking forward to working with J&PR who will make more people aware of the gardens and the work of the group.

He said: "It is great to be part of this new partnership which we hope will mutually benefit us both.

"We have been looking for someone to help us with our PR for a long time and we were thrilled when Kirsty from J&PR agreed to allocate us a dedicated PR account manager as part of their CSR programme.

"It is great for a business to want to volunteer their time to help a local community group like ours and I know we are very fortunate to be offered their professional PR and marketing services.

"We are excited to tell more people about the work we do and reach more people."

Kirsty Smallman, co-director at J&PR, said: "We are delighted to support the work of the Friends of Telford Town Park - their invaluable voluntary work ensures the gardens look amazing for visitors to our town.

J & PR Ltd

"They work very hard and the gardens wouldn't be what they are without the group.

"The town park is used by so many families but I think so many are walking past these beautiful gardens without realising what they offer.

"There's benches for people to enjoy picnics, there's areas for people to enjoy some peace and sensory garden too.

"People of all ages should be enjoying these beautiful gardens in the heart of Telford.

"The volunteers are amazing and always welcome more volunteers who are looking for company, to learn a new skill or simply want to support the town park.

"We look forward to boosting their profile over the next 12 months as part of our commitment to the community."

Telford Town Park has won a Green Flag Award for five consecutive years, which included UK Best Park in 2015 and Getting Active in 2017, and FOTTP were also handed the Queen's Award for Voluntary Service in June this year.

As well as looking for new volunteers to join their team, FOTTP is also looking for a new secretary and more supporters who want to hear about what they're doing and join Telford & Wrekin Community Lottery, Twincl, which boosts their income for tools and equipment.

The working party currently meet on a Wednesday but could introduce an additional Saturday group for people who can only be involved at the weekend, if there is demand.

For more information visit www.friendsoftelfordtownpark.org/ or call 01952 382340 and follow their work on Facebook @FOTTP



*Pictured in the Sensory Garden in the Chelsea Gardens are
l to r: Eileen and Kevin Smith, Brenda Pettman,
Maria Bright, Chris Pettman, Andy Harman,
Kathryn Allen, Christine Kane*



Chris Pettman (Chairman, FOTTP)
Kirsty Smallman (Co-Director J&PR)



Join us



The Friends of Telford Town Park started out in 2002 with just a few members and were formally constituted in 2003. We are now approaching our eighteenth year with nearly 30 members and lots of projects under our belt and in the pipeline. There is no doubt that in these days of financial difficulties everywhere, the Town Park included, we have made a real difference to the ongoing maintenance of the park for the benefit of the whole community and beyond, as well as winning some prestigious awards, including the Queens Award for Voluntary Service.

Some of our projects have involved the restoration of the Crannog on Grange Pool, the replacement of the wind vane on the Queens Jubilee Monument, the replacement of the old Sensory Garden, doing a fair amount of hedge laying and scrub clearing and built a large bug hotel and a Stumpery in the Chelsea Gardens. The Friends were also heavily involved in obtaining the £49,500 grant funding from SUEZ to reinstate the 2 fountains and the waterfall in the Chelsea and Maxell Gardens, which are now complete, despite some initial glitches and we've done much more besides.....!

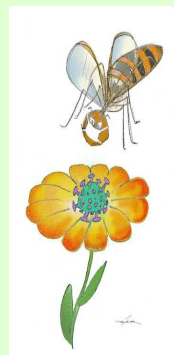
If you would like to become a part of this success story, contact us via our website or leave your details at the reception desk in the Visitor Centre. **FULL Membership is FREE** and carries some unique benefits, or you can become a **SUPPORTER member**.

CORONA VIRUS

Please note that at time of writing the Friends are now working again in Telford Town Park.

We are following Government Covid rules for working, by keeping 2 metres apart and sanitising all our tools before and after use.

www.friendsoftelfordtownpark.org
www.telfordtownpark.co.uk
www.telford.gov.uk



Garden News



Because of lockdown in March, the Friends only managed to get back to work in the gardens in mid August, so for 5 whole months the only work going on was by the idverde contractors. By far the worst amount of overgrowth was in the community garden beds. As you can see we are now getting on top of it all and restoring some kind of order. The compost bins were turned and tidied up, the weeds removed from the raised beds and fresh top soil added to bring the levels up. This was planned for March but of course never happened.

There are more plans for this area including a poly tunnel and possibly some more desperately needed storage space. We will also be looking into the pros and cons of some wind generated power.

Most of what we do in the formal gardens is geared around recycling, including plants, timber and anything else that could be transformed and upcycled. More ideas are always welcome!

Please note that currently, we are working under the government Covid rules and there is plenty of PPE and sanitisers etc to keep us all safe.

So, if you would like to get out in the fresh air and do something useful for the community and talk with some new friends, come and join us. No experience necessary !

Wednesday mornings from 9.30am - 1pm.
and some Saturdays.



The fish completed and below during work on it



The fish structure in the Maxell Garden was unveiled in August, showing off all the recycled drink cans that had all been carefully, cleaned, cut out and riveted to the fish, forming imitation scales.

The fish was once covered with sedums but had got into some state of disrepair over the years, so it has now been given a new lease of life and makes an attractive addition to the Maxell Cherry Garden. The Friends have more plans in mind to further enhance the Japanese feel of the garden, including a moon gate. The existing karesansui (Zen) garden will be moved to a more open and prominent position too. We are hoping that next Spring the Cherry blossom will be showing itself off in April.

We are grateful to Jackie Coyle and her family for the wonderful work on the fish and the helpers who cut out the cans and embossed them.



*Unveiling the fish on VJ day 15 August
L to r: Jackie Coyle, The Mayor, Chris Pettman and a photographer!*

Keep visiting our web site for updates on what is going on in Telford Town Park and also the Council website.

These gardens are a fantastic asset for Telford and we ask that they are respected as a peaceful garden and not a playground. Any damage has to be paid for and in these hard times financially that is such a waste.

Thank you.

2020 Fun Run

SUNDAY 6 December 2020
STORD TOWN PARK



**Every Air
Ambulance
All out costs
£2,500**

Annual target £100,000 +

www.midlandsairambulance.org.uk

This year's fancy dress fun run

Sunday 6 December 2020

Open from 10.30am

Please visit the Midland Air Ambulance Charity web site to check when you can register. Details soon.

Anyone could have a desperate need for the Air Ambulance because you just never know what is around the corner. This great facility does not receive any government funding and relies entirely on voluntary contributions.

**Provisionally, the next run will be
Sun 5 December 2021**

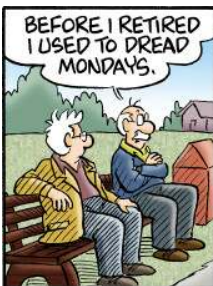
**In the meantime please continue to support
the Midlands Air Ambulance charity
whenever you can**

Brian's Retirement

On Friday 2 October Brian Gilbride retired from working as a gardener in the Town Park and other areas after 49 years service.. He was presented with a mature Olive Tree and is pictured with his partner Jackie Jones who is a duty officer in the park Visitor Centre. He will be greatly missed but we are hoping that once he has had a decent break he might consider joining the Friends. He frequently gave us advice in the Chelsea and Maxell gardens and was a great mentor for us. Good luck Brian for your well deserved retirement. Brian originally worked for the Telford Development Corporation, then TWS and latterly idverde, the current council contractors.



Jackie and Brian at a socially distanced farewell at the rear of the Visitor Centre



VISITOR CENTRE



Normal opening hours Including the formal gardens

Telephone: 01952 382340

10.00am - 5pm Sat, Sun and Tues, Wed, Thurs.

MAY, JUNE, JULY, AUGUST & School Holidays

10am - 4pm Sat, Sun and Tues Wed, Thurs .

MARCH, APRIL, SEPTEMBER, OCTOBER

10.0am - 3pm Sat, Sun and Tues, Wed, Thurs

NOVEMBER, DECEMBER, JANUARY and FEBRUARY

(Closed every Monday & Friday)

The nearest toilets outside of the above opening times are located in
Telford Ice Rink or SW.1 in Southwater Square.

Check opening times with Telford & Wrekin Council

School holidays have more opening times

**In case of life threatening emergency when
closed please phone 999 or 112**



Parking Dark Lane Car Park- charges apply

November to March 9.0 am - 6pm

April to October 7.0 am to 8 pm



News

Interesting TV programmes you may not know about

It will be stopping shortly for the winter but on BBC Scotland and repeated on **BBC 2** on Sunday mornings, **The Beechgrove Garden**, a 30 minute Scottish version of Gardeners World but better in my view. Just before that on a Sunday morning, **Landward**, another Scottish countryside programme about nature and wildlife. If you have never seen these programmes, it is worth going onto iPlayer or Freeview and catch up with them if you have an interest in the great outdoors and or gardening. Also on a Sunday morning for 2 hours on ITV, Alan Titchmarsh and **Love your Weekend**, a variety of subjects but including nature, filmed at Manor Farm in Hampshire, a country park owned by Hampshire County Council. Hope you enjoy! Chris, Editor.

Advertisement



**"Shropshire's leading Full Colour
Short Run Digital Print Specialists"**

Leaflets, Brochures, Graphic Design,
Business Stationery, Pull Up Banners, Posters,
Outdoor Banners, Glued Pads and much more!

Tel: 01952 670211

Email: studio@telfordrepro.co.uk Web: www.telfordrepro.co.uk
Hadley Park East, Telford, Shropshire, TF1 6QJ



Telford and Wrekin
Community Lottery

supporting



Play Twincl Lottery and support our cause!

- Make a difference to the community and support our cause
- Sign-up for only £1 a week!
- You get the chance to win cash prizes up to £25,000 every week!
- We get 50p from every £1 ticket and a further 10p goes to other good causes
- Join your community in making where we live an even better place

To start supporting, visit:

www.Twincl.co.uk

and search for: **Friends of Telford**

Supporters must be 16 years of age or older





The Fun Page

Well, 2020 went viral faster than we expected !

To avoid touching your face have a glass of wine in each hand !

The difference between the pandemic and Romeo & Juliet? One is a Corona virus the other is a Verona crisis !

I bet all the hand sanitiser companies are rubbing their hands together !

Have you noticed that since everyone is washing their hands a lot the bar snacks have lost their flavour !

There is another great virus joke but I don't want to spread it !

I went to the chemist the other day and asked the assistant what was a good product to kill the virus. She replied "Ammonia Cleaner".
I replied "Oh, sorry I thought you were the pharmacist !"

Thank goodness all the beauty salons have re-opened, it was getting ugly out there!

I could tell you another virus joke but it might take you a fortnight to get it !

Find the garden features listed

S G A Z E B O S Y L G F Q Z G S
Z V C S D T M N I A T N U O F R
D M E L U S P A C E M I T A P C
Z E U C K M S C U L P T U R E S
E M K O V H M D Z R K E P Z R F
N O E S R O H E Z N O R B T G B
G R M J O A L L R D P H T W O O
A Y H Q B S P C K H T A D U L W
R T E F C J N Y E L O B N N A I
D R A E C S I C X E V U L O K L
E E R T Y R R E H C S A S G O J
N E D R A G Y R O S N E S E Y W

CHERRYTREE

MEMORYTREE

SCULPTURES

TIMECAPSULE

BRONZEHORSE

GAZEBOS

RECYCLEDCANS

SUMMERHOUSE

ANNBOLEYN

FOUNTAIN

PERGOLA

SENSORYGARDEN

ZENGARDEN

Information

TOWN PARK EVENTS



Most events this year have been cancelled or postponed until 2021 due to the Corona Virus. Please check the Telford & Wrekin Council web site for more up to date information or visit **www.telfordtownpark.co.uk** or **www.friendsoftelfordtownpark.org**

Please note that due to changing circumstances the information in this publication may be out of date.

Please check with the Visitor Centre to see if any other events are taking place in the Town Park
01952 382340

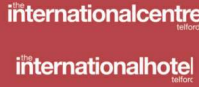
www.friendsoftelfordtownpark.org

Advertisement

Southwater Event Group

PROUD TO SUPPORT THE FRIENDS OF TELFORD TOWN PARK

With three hotels, the UK-renowned Telford International Centre and event production specialists Stagecraftuk, the Southwater Event Group is within convenient walking distance from Telford's convention quarter and the stunning Telford Town Park. Join us for a drink or something to eat at our restaurants in the Ramada or Holiday Inn during 2018 and see for yourself why our customer service is consistently rated 9/10 and above.



☎ 01952 527 385

💻 southwatereventgroup.com

🐦 @SwEventGroup



Advertisement



www.tinacorfieldphotography.com
01952 240624 or 07816 278322
contact@tinacorfieldphotography.com

Advertisement

Do you need social media training for your business?

j&pr

www.jandpr.com 01952 916073 info@jandpr.com



See pages 6 & 7 for our exciting new link up with this award winning company.