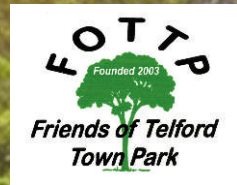


FREE

EXPLORE...

Summer 2024

Friends of Telford Town Park



www.friendsoftelfordtownpark.org
Promoting. Conserving. Protecting.

INFORMATION

Keep up to date with the Friends of Telford Town Park

Visit our website www.friendsoftelfordtownpark.org

Find us on Facebook <https://www.facebook.com/FOTTP>

Call in to the Park Visitor Centre or telephone **01952 - 382340**

FOTTP, Telford Town Park Visitor Centre,

Hinkshay Road, Telford, TF3 4EP



TELFORD TOWN PARK Green Flag Award 2023 - 2024



We are very grateful to the following
for their generous sponsorship and support:

Telford & Wrekin Council
The Telford Town Park Manager and staff
Southwater Event Group,
Henshall's Insurance Brokers Ltd
J & PR Ltd PR Consultants
Simmonds Transport and
Great Dawley Town Council
Madeley Town Council
Lawley & Overdale Parish Council
Stirchley & Brookside Parish Council
Hollinswood & Randlay Parish Council
Dawley Hamlets Parish Council

Front cover: Maxell Cherry Garden pool



Editorial Summer 2024

Time flies!

It has been quite a few busy months for the Friends, with Chris retiring from the role of chairman after 18 years of hard work.

I would like to say a huge thank you to Chris and his wife Brenda for their dedication to the Friends over those years.

I have now taken on the role of chairman so may I introduce myself, I am Adrian Smith and have lived in Telford for the last 43 years. I joined the friends just over a year ago when I retired. I have lots of ideas for the coming years with the help of the Friends and we have lots of exciting projects in the pipeline.

Over the last few months we have been busy within the Chelsea and Maxell gardens and also out in the main park clearing 2 bridges of weeds and helping them to look their best. See page 10.

On August 4th we will be holding a quiz for the children around the Chelsea gardens from 11-3. Please come along and support us and have a chat with one of the members about the work that we do.

We are always on the lookout for new volunteers, we meet up on a Wednesday morning from 9-1, if you have any spare time, please feel free to come along and join us. We also run a Saturday morning once a month again from 9-1, the dates will be displayed on our Facebook page (Friends of Telford Town Park). We would be grateful if you could support the work we do by signing up to TWINCL lottery which costs just £1 per week with a chance to win up to £25,000. The Friends benefit from ticket sales as we receive 50p for every ticket bought. All money raised goes towards items such as tools, paint and plants. Please join our Facebook page to see how our work helps to conserve, protect and promote the Town Park and also about upcoming events.

Do you need social media training for your business?

j&pr

www.jandpr.com 01952 916073 info@jandpr.com



**Proud to support the Friends of Telford
Town Park.**



For all your insurance requirements visit:

www.henshalls.com



mail@henshalls.com



01952 820358.

Authorised and regulated by the Financial Conduct Authority.

Littleford's Nursery

helping your garden grow

Sinclair Gardens, Ketley,
Telford, Shropshire, TF1 5HP
01952 246200 07930 660360
andrew.littleford@blueyonder.co.uk

10% discount for FULL FOTTP members



New sponsor

***Simmonds Transport Ltd
Stafford Park 11
TF3 3AY
01952 236010***

We are delighted to announce that we have now secured the sponsorship of a major hauliers that are based locally in Telford, Simmonds Transport Ltd. Thank you very much.

They have agreed to sponsor us for our environmental work in the park and we hope to have a long and fruitful relationship with them.

We already enjoy the support of the Southwater Event Group (The International Centre, Holiday Inn, International Hotel and the Ramada Hotel, all in Telford), Henshall's Insurance Brokers, (Newport) & J&PR Ltd (Wellington) who handle all our publicity requirements.

All of that support plus the wonderful people who contribute to our coffers by buying lottery tickets every week from the Telford & Wrekin Community Lottery (TWINCL) makes a huge difference to what we are able to achieve in the park along with, of course, the time and effort put in by our many members !





Low cost entry fees



**Natural History Museum
now open**



OPEN most days of the year 11 - 4 including the cafe.

Check web site for opening times before travel.

**Parking available (chargeable) in Dark Lane Car Park
Telford Exotic Zoo TF4 3GZ**

www.exoticzoo.co.uk

01952 591164

Southwater Event Group

PROUD TO SUPPORT THE FRIENDS OF TELFORD TOWN PARK

With three hotels, the UK-renowned Telford International Centre and event production specialists Stagecraftuk, the Southwater Event Group is within convenient walking distance from Telford's convention quarter and the stunning Telford Town Park. Join us for a drink or something to eat at our restaurants in the Ramada or Holiday Inn during 2018 and see for yourself why our customer service is consistently rated 9/10 and above.



☎ **01952 527 385**

💻 **southwatereventgroup.com**

🐦 **@SwEventGroup**



TOWN PARK GUIDE BOOK

32 pages only £2



**Grab your
copy soon !**

The Friends have published a new 32 page souvenir guide to Telford Town Park showing all the attractions along with some history of the park and some past events. This guide makes a wonderful souvenir of your visit and has useful information, so that on your next visit you may find out more about the 450 acres of park, woodland, lakes and local nature reserve. The price is just £2 and is available from the Visitor Centre and the Exotic Zoo. Make sure you get your copy.

In case of difficulty please contact us via our web site.

www.friendsoftelfordtownpark.org



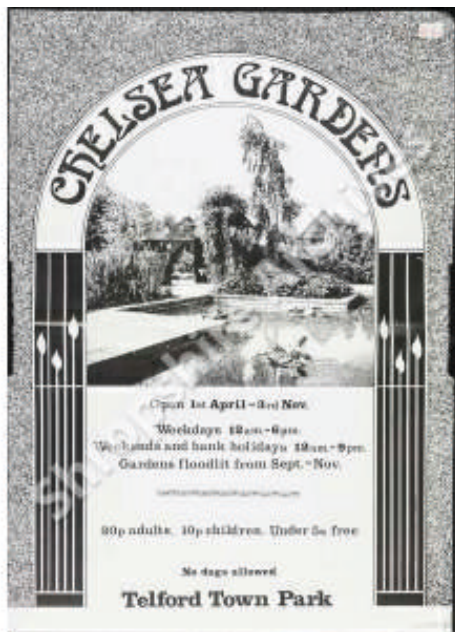
Wonderland

Wonderland in Telford Town Park, fabulous fun for all the family to have a great day out.

See website for opening times.

www.wonderlandmidlands.co.uk

Did you know ?



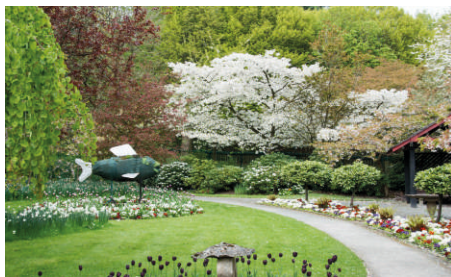
Many years ago there was a charge to go into the Chelsea Gardens, 20p for adults and also 10p for children as this brochure shows! Thankfully it is now free.

We do however prefer you to keep your **dogs on a lead** so that the volunteers do not suddenly come across something unsavoury when digging in the gardens!

Also, it is **safer for children**, who can be alarmed if a friendly dog runs up to them rather too enthusiastically

Do enjoy the gardens!!

The Chelsea Gardens are so named because there were originally 3 gardens that were designed by the late David Wassell MBE for the Chelsea Flower Shows of 1977, 78 and 79. As they were award winning gardens, the then Telford Development Corporation decided to reinstate them in Telford Town Park. They were later joined by the Maxell Cherry Garden in 1983, sponsored by the Maxell Corporation, now Maxell Europe PLC, who are still manufacturing in Telford.





Join us

**No experience
necessary!**




Telford & Wrekin Council's 10 year strategy for Telford Town Park as of January 2024

Telford Town Park Strategic Framework launched

A new Strategic Framework for Telford Town Park has been launched and sets out a ten-year vision for the Town Park which recognises the special quality of the site and looks to building upon existing successes and meet new national and local priorities.

Six key aims for Telford Town Park have been identified in the Strategic Framework:

-  More accessible and connected
-  More engaging and inclusive: work to reduce social and physical barriers and invest in important physical infrastructure, extend the events and activities to make the Town Park a year-round attraction
-  Improving health and wellbeing
-  Enhance biodiversity and heritage: protecting and enhancing the built and natural heritage of the Town Park and supporting a greater range of people to have more contact with the built and natural heritage
-  More sustainable management: look to secure investment in the Town Park and introduce new commercial activities where they will enhance the offer
-  Contributing to a carbon neutral borough: a sustainable approach to managing the Park in line with the council's Carbon Reduction Management Plan

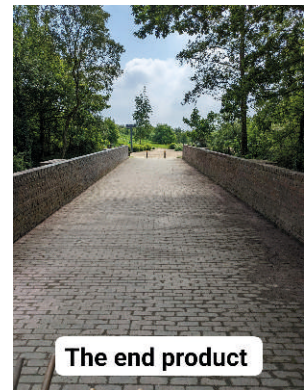
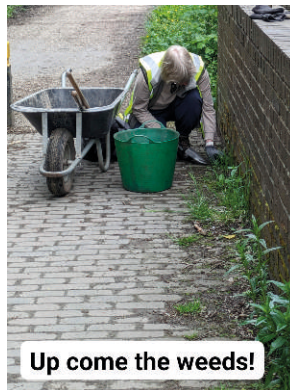
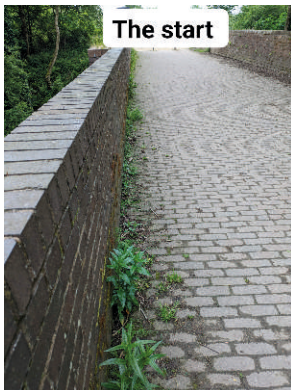
This Framework proposes a draft 'vision' for Telford Town Park, this being that 'Telford Town Park is an accessible, connected and inclusive green space that improves the health and wellbeing, provides connection to nature and heritage for local and regional visitors and contributes to a carbon neutral borough.'



Park News



Two of the bridges over the Silkin Way were in some need of tender loving care. So the Friends set about it with gusto! The result was very satisfying and they are now keen to get the railings repainted.



Yet another bridge needing attention! Much larger but not quite as badly overgrown, the Friends set to again. We must agree the result was worth all the hard work put in on just one Saturday morning ! It also turned out that the bridge shown at the top of the page also needed some remedial work to the structure, so the painting has had to wait until the work has been carried out by a professional contractor. Well done to those that helped to make the Park better.

Yet more news !

Yes, we even find time to grow a few vegetables. Chris (ex chairman) is able to help out by cultivating some produce for the Friends to enjoy, hopefully !

We have had some charities growing vegetables in the Community Garden with mixed success. If any group would like the opportunity please get in touch.



Andy Harman getting stuck in to a bit of much needed weeding! Well done Andy, your help is much appreciated.

Andy has been with the Friends for a number of years now and really looks forward to coming to the gardens on a Wednesday morning to help keep the gardens in good shape.

Brian, who has known the gardens for a long time in a professional capacity now, after retiring, works with the Friends. He is here shown passing on his intimate knowledge of the gardens to some interested visitors on a special tour of the gardens. If you would like a group visit with a guided tour please get in touch. No charge but donations are always welcome !



2024 Fun Run

Postponed to 2025

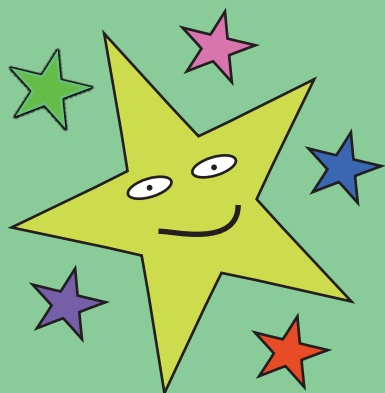
Due to unforeseen circumstances the 2024 Fun Run in Telford Town Park has had to be postponed. We look forward to it being reinstated as a charity event in December 2025. See you all then !

Volunteering

Y	R	H	H	E	A	L	T	H	Y	B	D	A	Y	I	O	T	F
B	L	L	A	W	I	M	R	T	L	I	Z	W	U	R	L	E	R
G	S	U	X	P	E	R	D	A	W	H	O	K	S	Q	N	C	I
B	K	X	W	R	P	L	E	P	N	J	G	R	E	E	N	O	E
Y	B	S	A	N	I	Y	L	P	L	I	N	Y	F	P	A	L	N
Z	R	C	E	K	J	B	X	B	A	A	A	H	U	D	D	O	D
Q	L	B	K	S	J	A	D	F	E	I	N	Q	L	T	R	G	L
B	A	X	O	D	M	E	Y	R	V	I	R	T	R	Q	I	I	Y
M	S	A	T	I	S	F	Y	I	N	G	N	I	I	U	G	C	P
J	T	E	A	M	W	O	R	K	V	U	X	G	N	N	I	A	K
F	X	K	N	I	G	M	G	S	E	J	F	B	V	G	G	L	C
X	P	A	I	N	T	I	N	G	R	V	A	O	P	S	U	E	D

Words can be up,
down, across or
backwards.
Solution on
Page 14

SATISFYING ECOLOGICAL PAINTING
REPAIRING WELLBEING TEAMWORK
PLANTING FRIENDLY HEALTHY
USEFUL GREEN HAPPY

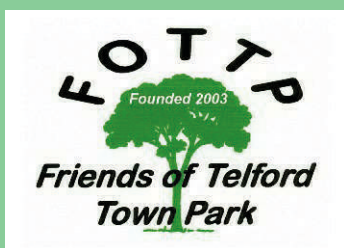


TwinCL TwinCL

Little star

How we wonder where you are !

Become a star and love Telford Town Park
Please sign up for the
Telford & Wrekin Community Lottery
and help us to maintain our beautiful park in
pristine condition



Weekly draws

Only £1 a week

Top prize

£25,000



50p from every ticket goes directly to FOTTP

www.friendsoftelfordtownpark.org

www.twincl.co.uk



BeGambleAware.org®

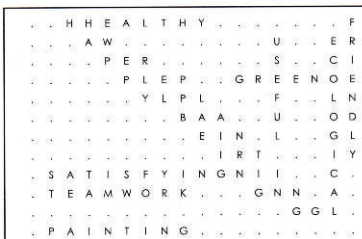
News



Another corner of the Chelsea Gardens gets attention from the Friends ! This time it is a bit of an overgrown area on the left just as you enter the gardens from the bandstand. The safety posts have been smartened up with a coat of green paint and a new path laid with donated stones. There are always jobs like this within the gardens that need a bit of TLC and anyone can do this, no experience is needed ! If you fancy getting involved with a bit of love and care in the Town Park then please come along and join our happy band of volunteers. We are in the gardens every Wednesday from 9 a.m. till around 1 p.m. Come rain or shine!!! The gardens are a wonderfully calm and lovely place to pop in and have a picnic lunch. You would never know that you will only be a few hundred metres from Telford town centre. Come and listen to the birds and you might even catch sight of our visiting black and white cat !

WORDSEARCH SOLUTION

Volunteering



Word directions and start points are formatted: (Direction, X, Y)

SATISFYING (E,2,9)	PLANTING (SE,9,4)	GREEN (E,12,4)
ECOLOGICAL (S,17,2)	FRIENDLY (S,18,1)	HAPPY (SE,3,1)
REPAIRING (SE,7,3)	TEAMWORK (E,2,10)	
WELLBEING (SE,5,2)	HEALTHY (E,4,1)	
PAINTING (E,2,12)	USEFUL (S,14,2)	



A well earned rest !

VISITOR CENTRE



Normal opening hours

Please check the town park web site for up to date details

www.telfordtownpark.co.uk

Telephone: 01952 382340

In case of life threatening emergency when the centre is closed please phone 999 or 112

A defibrillator is available on the adjacent building. Emergency services will give you the unlock code



Parking Dark Lane Car Park- charges apply

November to March 9.0 am - 6 pm

April to October 7.0 am to 8 pm

A variety of information is available from the Visitor Centre when reception is open. Town Park and Trail guides, souvenirs, vending machines for hot drinks and refreshments. Cards accepted as well as coins. **The Place in the Park** cafe is often open at weekends (good weather or an event is on) and during the school holidays. Events are often taking place in the park. Check web site for details.

Telford & Wrekin Council

TOWN PARK EVENTS

Telford Town Park QE 2 Arena

Fri 23, Sat 24, Sun 25 August

Balloon Fiesta

In addition to the above there will be Graham Stokes Funfair on for some of the school holidays. Check with the Town Park web site and Facebook for further information on other events within Telford Town Park.



Balloon Fiesta 23 - 25 August
Free event (not NIGHT GLOW)
Plus Telford Carnival
Sunday 25 August 12 noon
Southwater & QE2 Arena



Friday 23 Aug 5 p.m. To 10 p.m.
Night Glow - Tickets required.
Priority booking for
Telford residents.
<https://bit.ly/4cvCU7>



www.telfordtownpark.co.uk